

FF&E GENERAL NOTES

ALL FF&E IS FOR COORDINATION ONLY UNLESS INDICATED OTHERWISE.

PROVIDE NEW MANUAL WINDOW SHADES AT ALL SOUTH-FACING WINDOWS ON FRONT FACADE (1ST AND 2ND FLOORS).

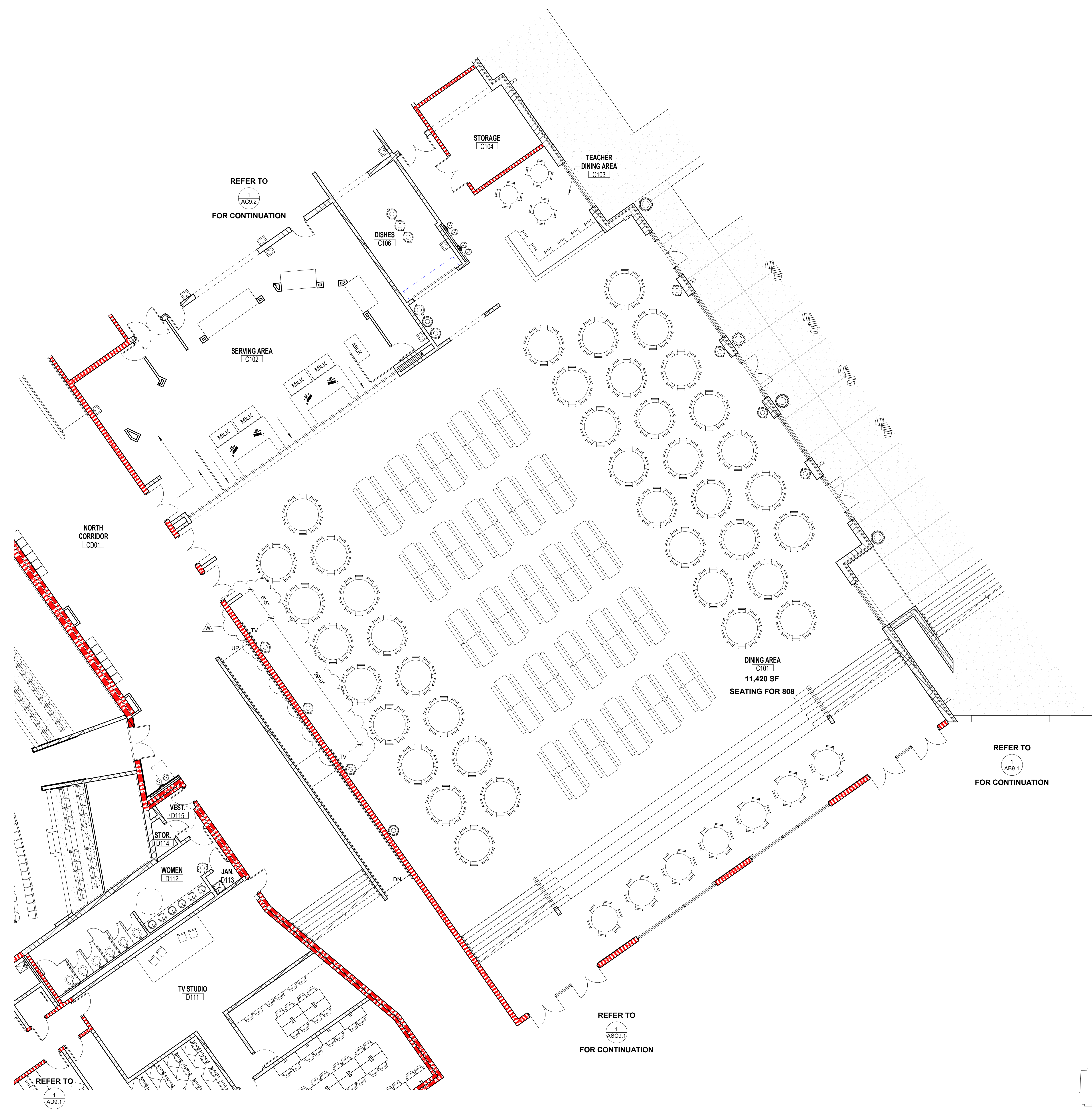
PROVIDE NEW MANUAL WINDOW SHADES AT AS102, A114, A115, A116, & A117, B142, B148, B151, B152, E115 (SOUTH-FACING WINDOWS ONLY), E116, E214, E215, F101, F103, F104, F106, F115, M129, M127, M122

PROVIDE NEW MOTORIZED SINGLE MESH WINDOW SHADES ON EXTERIOR WINDOWS IN CAFETERIA.

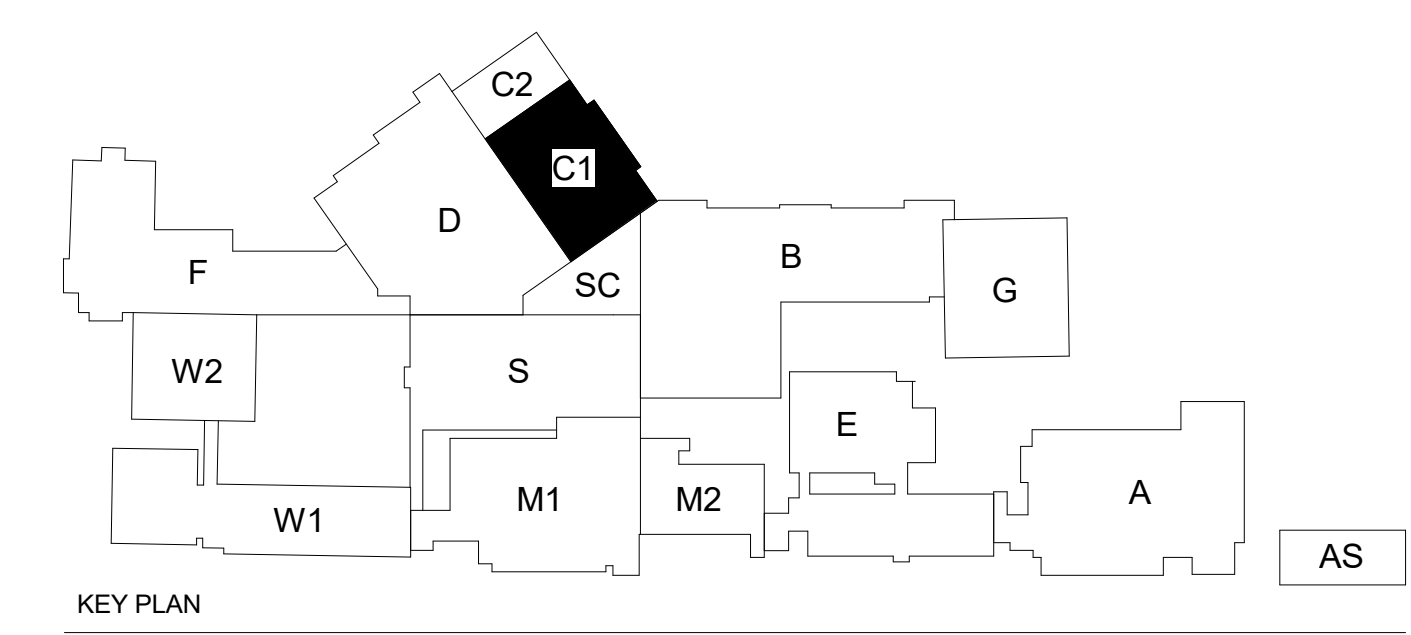
PROVIDE DUAL MESH AND BLACK OUT WINDOW SHADES AT ALL CONFERENCE ROOMS.

PROVIDE SINGLE MESH WINDOW SHADES AT ALL OTHER ROOMS INDICATED

TV - REFER TO AV SHEETS



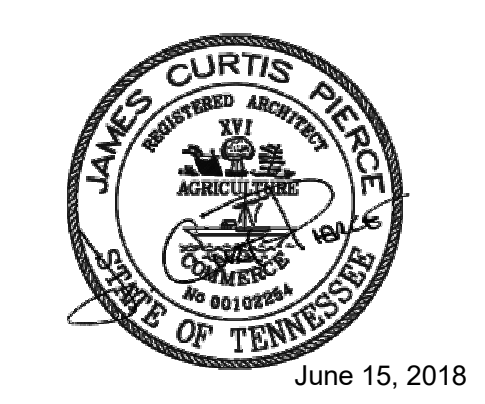
1 C1 (CAFETERIA) - FIRST FLOOR FURNITURE PLAN
1/8" = 1'-0"



5101 WHEELS DRIVE, SUITE 215
MEMPHIS, TN 38117
T: 901.767.3924 | F: 901.767.7136
www.flemingarchitects.com

COPYRIGHT NOTICE
COPYRIGHT AND DESIGN RIGHTS RESERVED. ALL RIGHTS RESERVED. THIS DOCUMENT IS PROPRIETARY TO FLEMING ARCHITECTS AND MAY NOT BE REPRODUCED OR TRANSMITTED IN ANY FORM OR BY ANY MEANS WITHOUT THE WRITTEN CONSENT OF FLEMING ARCHITECTS.

Bartlett City Schools
Bartlett High School Renovations
PHASE 3 - Building Package - VOL. 1 of 2
5688 Woodlawn St
Bartlett, TN 38134



REVISIONS		
Revision Date	Rev. #	Revision Description
1-31-19	W	ASI #20
PROJECT NUMBER 400417		
DATE OF ORIGINAL ISSUE June 15, 2018		
SHEET NUMBER AC9.1		

BUILDING C1 (CAFETERIA) - 1ST FLOOR
FF&E PLAN